



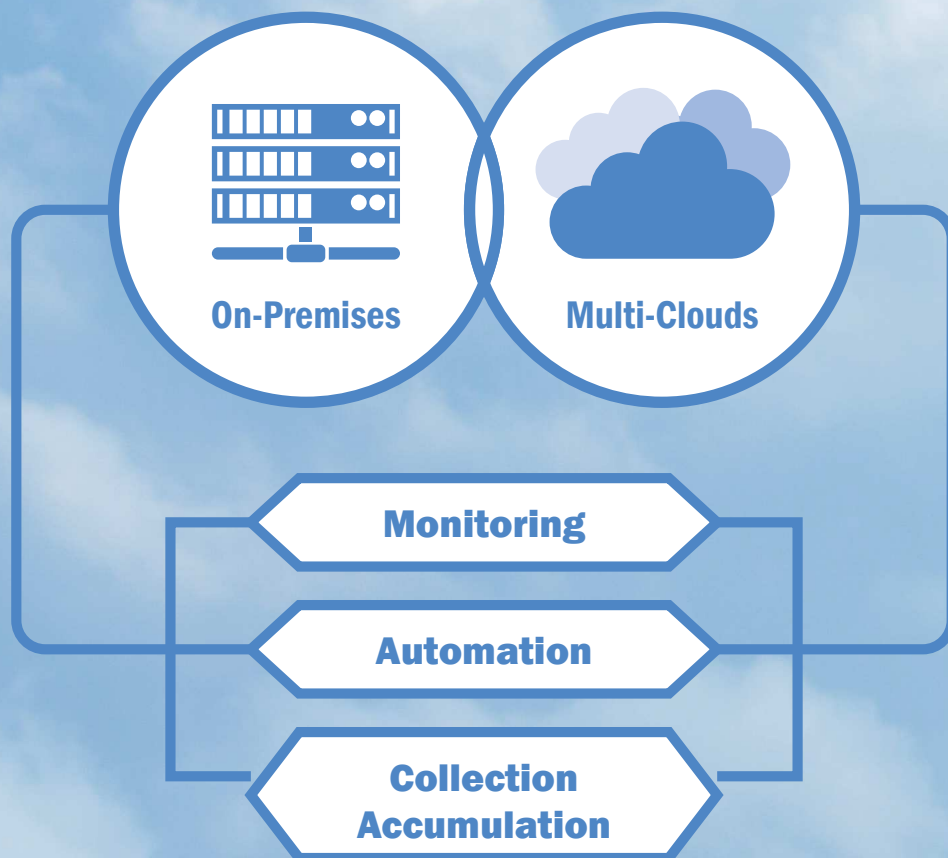
Integrated System Operations & Management Software for IoT Era

Hinemos



Hinemos

Hinemos™ is the Integrated System Operation & Management Software, which enables aggressive operation policy. Thus you can concentrate on your businesses.



Integrated System Operation & Management

For your IT systems, Hinemos™ provides every conceivable management functions, including Monitoring, Job Operation and so on. Hinemos includes all of what customer requires.

Simple and Easy Operation

Hinemos Manager and Hinemos Client can be installed in single command. Agents can be also installed by one click. You can easily add agents when needed. Hinemos™ provides simple and unified operation management features for complicated system via Web browsers.

Open Source Software

Hinemos™ can manage variety of platforms with one Hinemos Manager. It will be able to reduce your IT management cost dramatically.

High Quality Support Service

Over 600 thousand downloads provide fully proven accumulated knowledge. In addition, Hinemo support is available 24 hours a day, 7 days a week.

Basic Functions

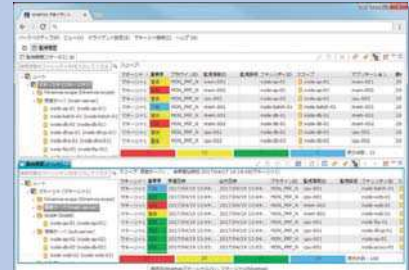
Monitoring

System Monitoring

System monitoring function provides following features:

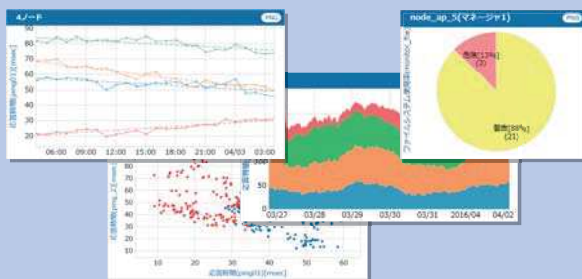
- PING
- SQL
- HTTP
- HTTP Scenarios
- SNMP
- SNMP TRAP
- JMX
- Process
- Resource
- Service - Port
- Windows Service
- Log file
- Event Log
- Agent
- [Custom]
- [Custom TRAP]

This function also enables monitoring based on business calendar, such as the daytime on weekdays. You can check the monitoring results on the Hinemos client, e-mail and command line tools. You can choose suitable way to check the results. You can create the configuration easily from the GUI and you can start using immediately.



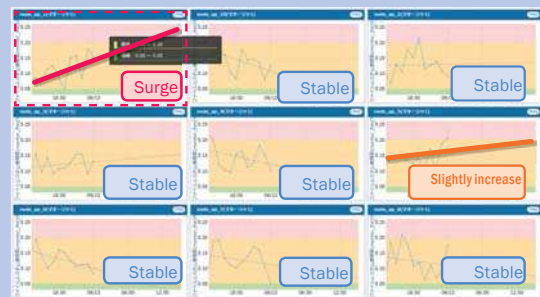
Variety of performance graphic charts

Collected data can be shown on various chart display based on purpose, such as a line chart, pie chart, scatter, bar and so on. You can also browse the contents of the log for a specific point on a chart, which occurred at that time.



Feedback for system operation w/ monitoring results

While browsing the status of operation, you can check and modify the threshold of monitoring settings on graphic charts. You may find out future troubles with the trend analysis.



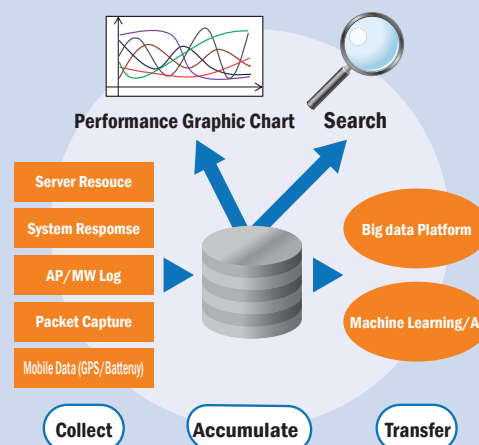
Collection/Accumulation

Data collection, accumulation and transference

Hinemos can collect and accumulate all data from servers and network devices.

It can also handle the information of GPS, battery status and beacon information in Android without limiting the type and usage.

If you utilize data with other data warehouse/big data analysis platform, you will obtain huge effect from SIEM, security warning detection, marketing analysis and so on.



High speed data search

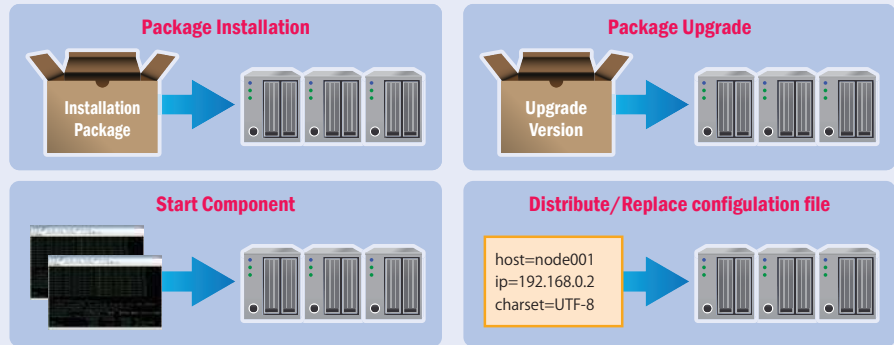
Hinemos provides high speed data search for collected data using the term, keywords, and/or tags. Hinemos can handle the log spans multiple lines and pick up important information in the log. So you can quickly extract the information you want, such as the event which occurred during a specified period, or the access log of defined IP addresses.

Automation

Automated Environment Configuration

Environment Configuration feature can automate series of environment configuration without agents, such as distribution of files, command execution, verification of contents or replacement of contents.

All operation will be done via GUI without complicated script and/or source code.



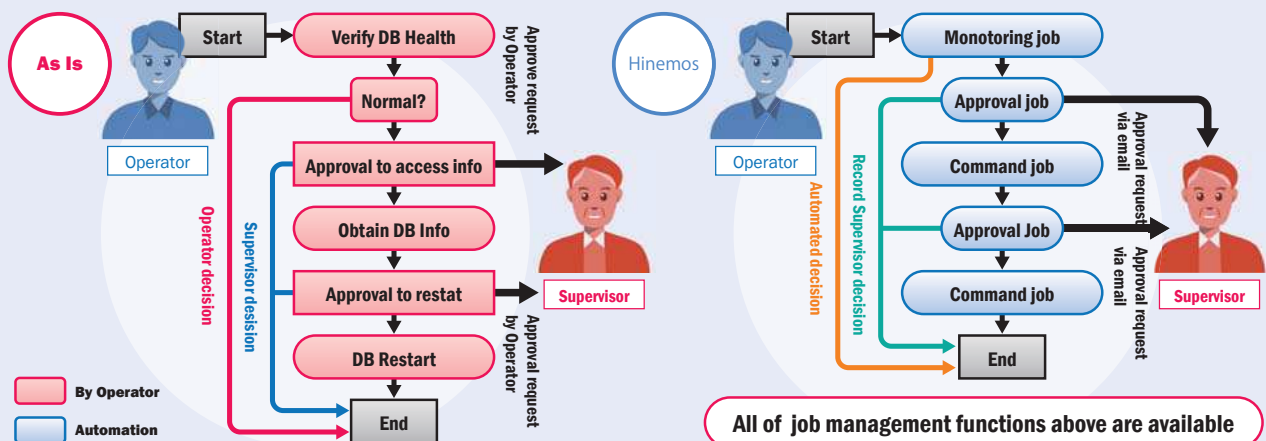
Automation business process through full-scale job function

Automated business process enables to manage complicated jobnets schedule, which is necessary for system operation. Hinemos has flexible and powerful job execution functions for the automation of operation. By calling the monitoring functions from jobs, operator can also easily verify results of job execution.



Automation of system management processes

Hinemos automates routine operation, a series of operation when event occurs starting approval to actual operation. In addition, Runbook Automation implements to same interface of job operation, it provides easy operation and delivers workflow (jobnets) which requires complicated judgment.



Optional Functions

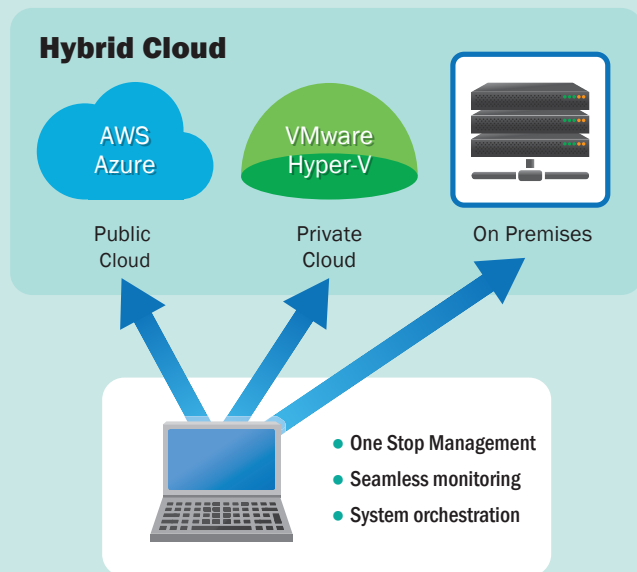
* Need to purchase subscription in order to add Optional Functions.

Option

1

Cloud & Virtualization Option

This option will expand targets seamlessly, not only for traditional physical server systems, but also Cloud services such as AWS, Azure and Hybrid Cloud including Virtual Environments such as VMware and Hyper-V.



Support Multi-Hybrid Cloud enables to support without attention regarding Cloud or On-Premise. Also, you can manage several intermingled systems with a monitor easily.

Cloud/Virtual environments monitoring enables to handle characteristic information for cloud/virtual environments, such as billing information, which would not grasp from OS layer.

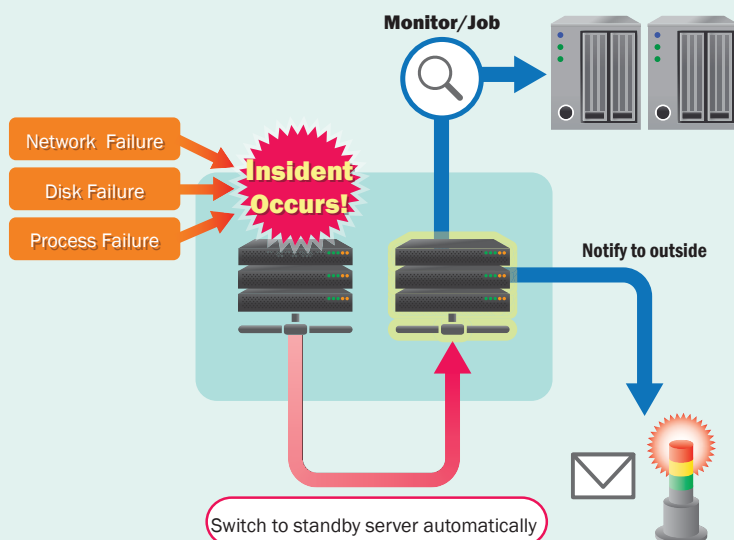
Automated detection and job execution by dynamic environment changes
Full automation is available by detecting any changes of virtual servers and execution of suitable monitoring or jobs.

Option

2

Mission-Critical Option

Support the mission-critical systems which require 24h x 7d non-disruptive operation.
Improve reliability of operation management by utilizing Hinemos Manager redundancy.



Non-Stop automated operation even in case of system failure

When hardware/software failure occurs, non-stop operation continues by automatic switching. Also, no message lost happens during transition.

No Special hardware and software needed

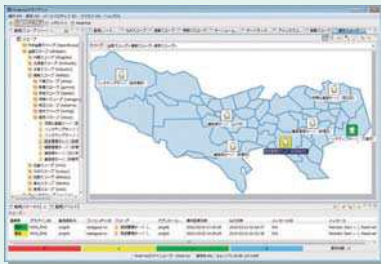
Minimum system componets are two sets of typical standard IA servers only. No need to have special tests such as using with clustering software.

System continuity without service failure

Notify users of server failure and switch to other server without service failure.

Enterprise Option

Today, enterprise systems are growing larger and complicated. Hinemos provides Visibility and Simple Operation in order to operate systems efficiently.



Node Map

It makes daily operation of complicated systems more easily with Node Map Editor and Viewer. You can register nodes and scope by simple mouse operation, and view the map which was colored by types of event of each node or scope.



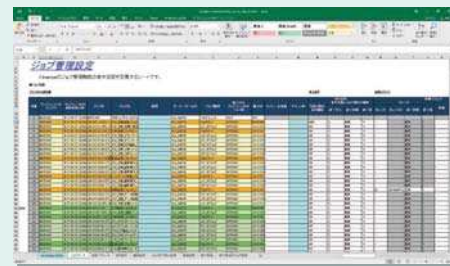
Job Map

Job map Editor enables creating jobnets by simple mouse operation and Job Map Viewer displays job flow which shows status of jobnets. Job-flow will be clearly visible by both tools.



Reporting

Automated email distribution of operation report will be issued based on occurred event, performance data or job history. Many templates are prepared for your immediate use.



Excel Import/Export

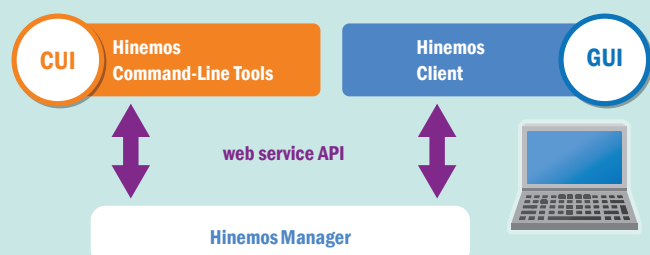
Hinemos configure to import/export large volume of data into Microsoft Excel format. Also, you can register information of MIB for SNMP traps.

Handy Tools

Command-Line Tools

Hinemos web service API enables all of operation of Hinemos client by utilizing Command-Line Tools simply.

Using Hinemos Command-Line Tools enables to execute only by simple commands. It automates series of operation without human resources, including registration of nodes and scope, configuration of monitoring and so on.

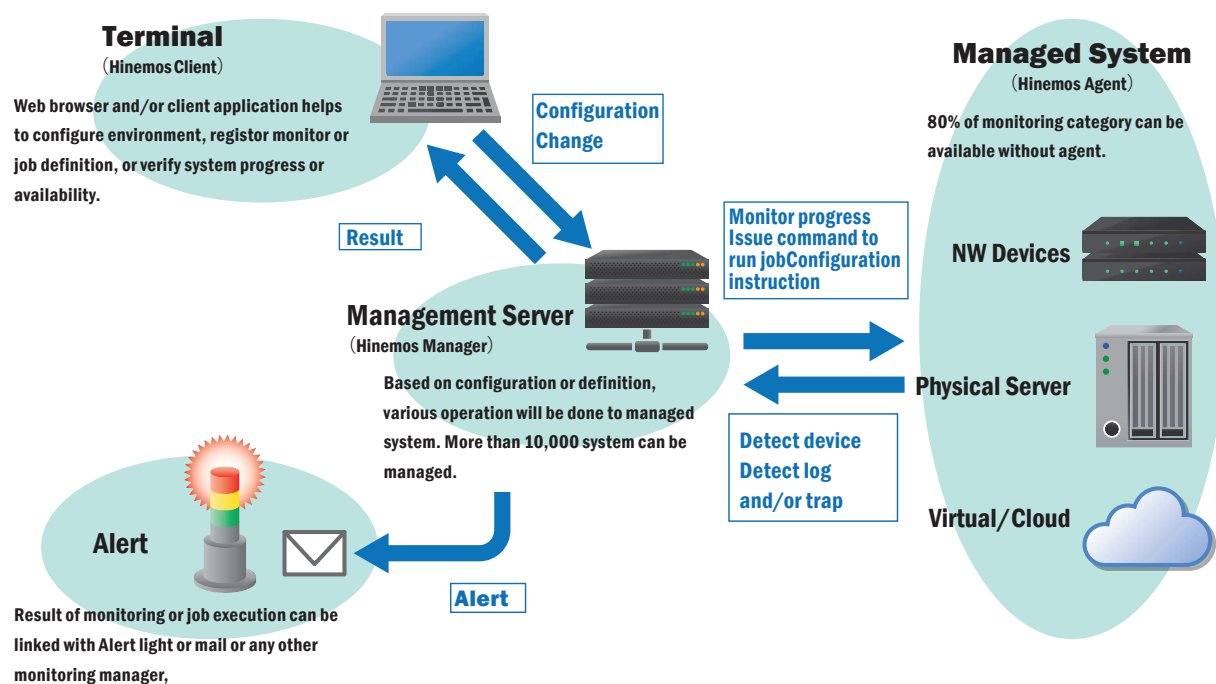


Supported OSs & Web Browsers

Hinemos Manager		Red Hat Enterprise Linux 6, 7 CentOS 6, 7 Windows Server 2012R2
Hinemos Agent	Linux	Red Hat Enterprise Linux 5, 6, 7 Oracle Linux 5, 6, 7 CentOS 5, 6, 7 Amazon Linux Ubuntu 16.04LTS SUSE Linux Enterprise Server 12
	Windows	Windows 7, 8, 8.1, 10 Windows Server 2008, 2008R2, 2012, 2012R2, 2016
	UNIX	Solaris 10, 11 (SPARC, x86) HP-UX 11i v3 AIX 7.1, 7.2
	Android	Android 4.4, 5.0, 5.1, 6.0
Hinemos Client (Windows Application)		Windows 7, 8, 8.1, 10 Windows Server 2008R2, 2012, 2012R2, 2016
Hinemos Client (Web Browser)		Microsoft Internet Explorer, Mozilla Firefox, Google Chrome (latest version)

The above table describes the supported OSs and web browsers for Hinemos ver. 6.0. For more information, please go to Hinemos portal site <<http://www.hinemos.info/en/top>>. Linux environments such as Linux on Power, z Systems, LinuxONE, Oracle Exadata Database Machine and SAP/SAP HANA are also supported.

System Components Overview



If you have any questions on product availability and product support, please submit a inquiry form on its portal site.

Hinemos Alliance

<http://www.hinemos.info/en/top>

GitHub Hinemos project: <https://github.com/hinemos/hinemos>

- Hinemos is a trademark of NTT DATA INTELLILINK Corporation.
- Other company names and product names may be their own trademark or registered trademark.